




**RAUMA MARINE
CONSTRUCTIONS**

New innovations and possibilities an extension to old traditions

Rauma Marine Constructions was founded in 2014. The wholly Finnish-owned shipbuilding company has created a completely new starting point for the continuation of the long-standing shipbuilding tradition in Rauma, dating back to the 16th century.

Over the years, Rauma shipyard and maritime cluster has gained extensive experience in building and servicing car and passenger ferries and specialized vessels such as icebreakers and naval vessels.

The outlook for small and medium-sized vessels appears good for the foreseeable future. Rauma Marine Constructions continues the strong shipbuilding tradition in Rauma with a new project-oriented and partner network approach.



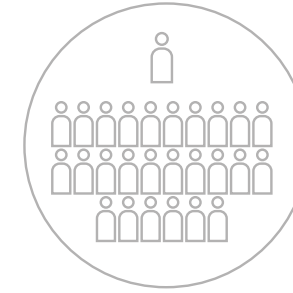
Dry-dock: 260 m x 85 m
Lifting capacity: 450+ tonnes
Outfitting quays: 240 m, 220 m
Building capacity: Up to 80,000 GT

Project management and partner network

For every commission, we create a uniquely specialized project team from our network based on the individual project requirements.

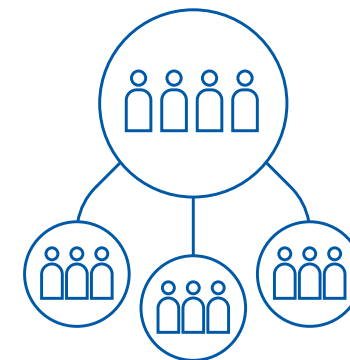
This allows us to focus on the essential value-adding activities and retain excellent flexibility. All partners are fully committed to the project's success from the very beginning all the way up to the delivery of the vessel.

Rauma Marine Constructions acts as the project manager in combining top Finnish marine cluster know-how and products for every project. We are also responsible for project financing, control and quality.



The business model of a traditional shipyard

- ▶ Personnel expenses and fixed costs of a large organization
- ▶ Compartmentalized roles and responsibilities



The Rauma Marine Construction business model

- ▶ A transparent organization based on expert knowledge, long-standing strategic partners
- ▶ Maximized knowledge in their own organization as well as in partner companies

Competitive advantages

Skilful workforce

Rauma Marine Constructions' employees make up the core of the business. The shipbuilding company specializes in vessel design, naval architecture, construction and outfitting operations.

An attractive working environment

A continuous stream of new projects makes Rauma Marine Constructions an attractive working environment also for the younger generation. Rauma's shipbuilding heritage has attributed to the company's strong reputation globally.

A wide product portfolio to minimize risks

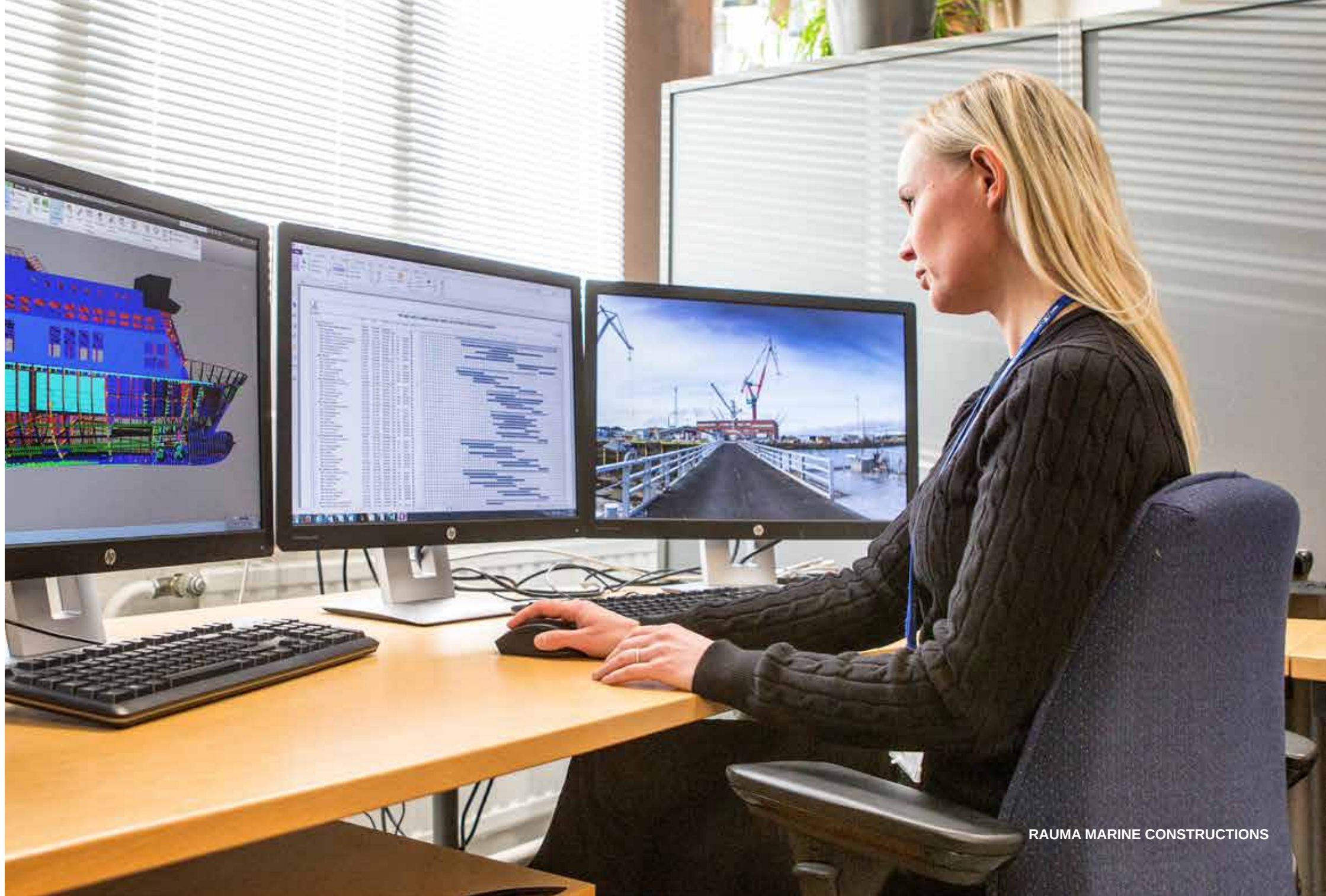
Rauma Marine Constructions has a wide project portfolio. The shipyard in Rauma encompasses facilities and know-how to construct a multitude of different vessel types.

A fully-equipped shipyard

Rauma shipyard has its own steel structure production, uniquely wide dry-dock which allows the construction of multiple vessels at the same time, and two unique outfitting quays.

Customized solutions

Rauma Marine Constructions develops concepts internally utilizing extensive in-house knowledge. The company's mission is to offer its customers specialized vessels and customized solutions, utilizing its extensive partner network. The company also aims to be a forerunner in the implementation of new technologies.



Car and passenger ferries (RoPax ferries)

Customizing every solution for the perfect match

The car and passenger ferries represent one of Rauma Marine Construction's main product segments, with demand growing at a rewarding speed. The portfolio includes RoPax ferries of many different sizes. Since the 1990-ties, the shipyard, previously under various ownerships, has delivered RoPax ferries to some of the biggest operators globally, including P&O Ferries, Tallink-Silja, Color Line, Brittany Ferries, and Stena Line.

With its own steel structure manufacturing facilities, Rauma Marine Constructions can manufacture up to 15,000 tonnes of steel per year and boosts a building capacity for vessels up to 80,000 GT. In addition, Rauma Marine Construction's facilities include a ground stone supported dry-dock that can incorporate vessels up to 260 meters in length. Furthermore, the shipyard's two outfitting quays ensure that the shipyard can build ferries efficiently, as three ferries can be outfitted at the same time and a fourth ferry can be placed in the dry-dock.

Arctic vessels and research vessels

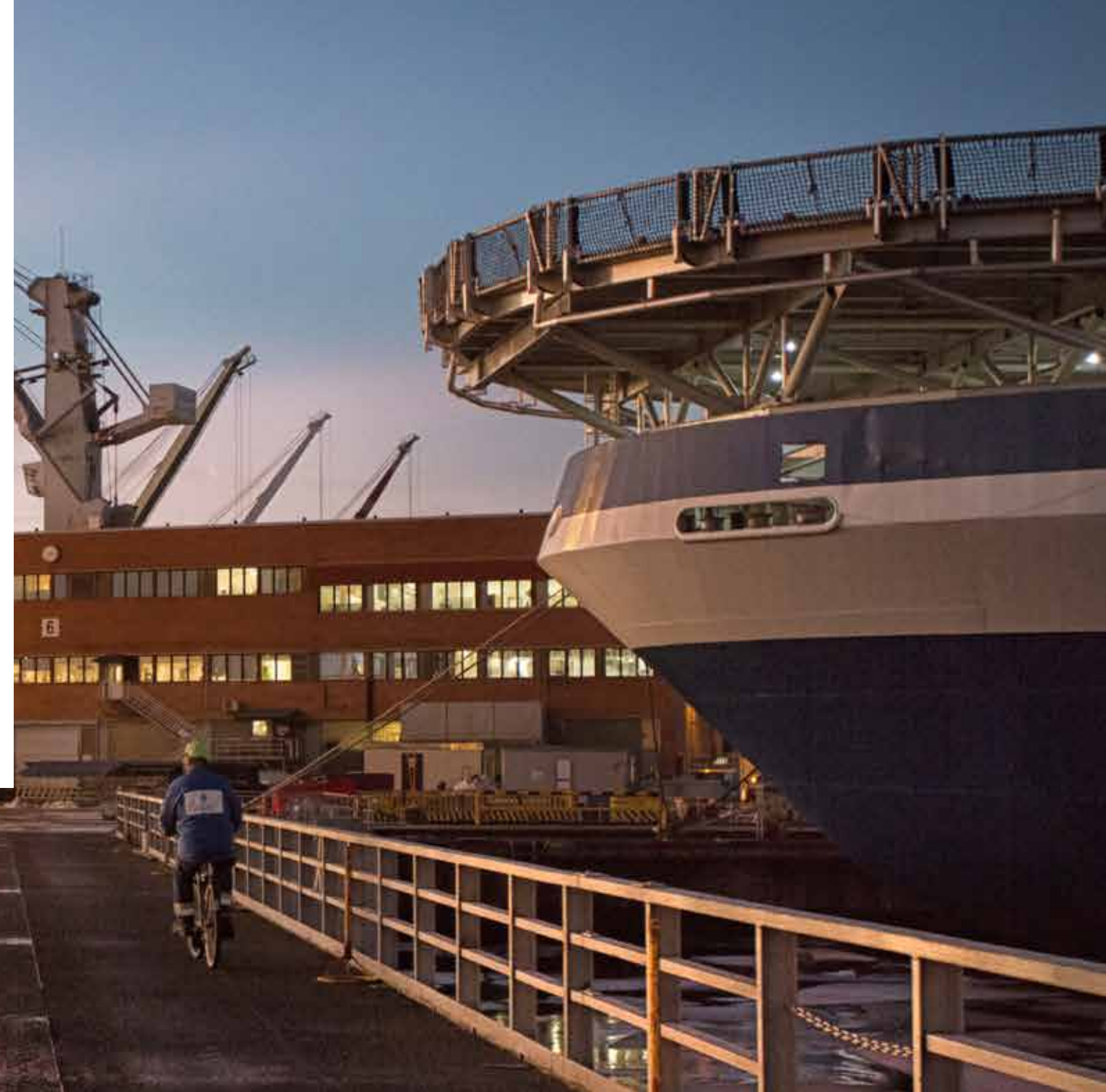
Breaking the surface

The Finnish maritime industry is specialized in Arctic navigation, which stems from an ambitious and excellence-oriented approach to Arctic shipbuilding.

Rauma Marine Constructions represents the highest standard in Arctic shipbuilding. In every project, Rauma Marine Constructions' main mission is to provide a successful vessel design tailored to the customer's needs. Rauma Marine Constructions both designs and constructs Arctic vessels, as well as provides lifecycle services for the vessels.

Ships with Arctic navigation capability is one of Rauma Marine Construction's focal points and in Finland, the company cooperates with Universities, several design companies and experts to increase know-how and remain at the forefront of Arctic navigation.

Rauma Marine Construction's product portfolio also includes a wide variety of research vessels, which require a diverse range of features. The research vessels constructed at Rauma shipyard are used globally for different purposes.



Providing maximum value for the client

Rauma Marine Construction's value approach has remained the same since its founding; the aim is to maximize earning capabilities and functionalities of the ships delivered.

Rauma Marine Construction avoids one-size-fits-all approaches, assembling its vessels using components from many different suppliers and utilizing a specialized project team from the wide partner network. In addition to maximizing value, the approach also makes the most of any available technology.

Naval vessels

Utilizing technical expertise for the best naval vessels

Rauma shipyard has a strong background in building naval vessels. All Finnish Navy combat vessels have been built at Rauma shipyard since 1986. Rauma Marine Construction continues this tradition. Since 2016, Rauma Marine Construction has participated in the development of Finnish Navy's next-generation combat vessels.

Naval vessels present a challenge to any shipyard, due to the considerable level and amount of technologies involved. Both the ship systems and combat system, the core of the naval vessel, need to be integrated to a high level of functionality. Rauma Marine Construction encompasses the knowledge and experience to successfully perform these demanding tasks.

Rauma Marine Construction is an expert when the crucial thing to consider is the intended purpose of the vessel. Rauma Marine Construction is an expert when it comes to adapting the vessels constructed for different missions.



Rauma Marine Constructions Oy

**PL 55, Suojantie 5
FI-26101 Rauma, Finland**

**+358 30 600 5400
info@RMCfinland.fi
www.rmcf Finland.fi**